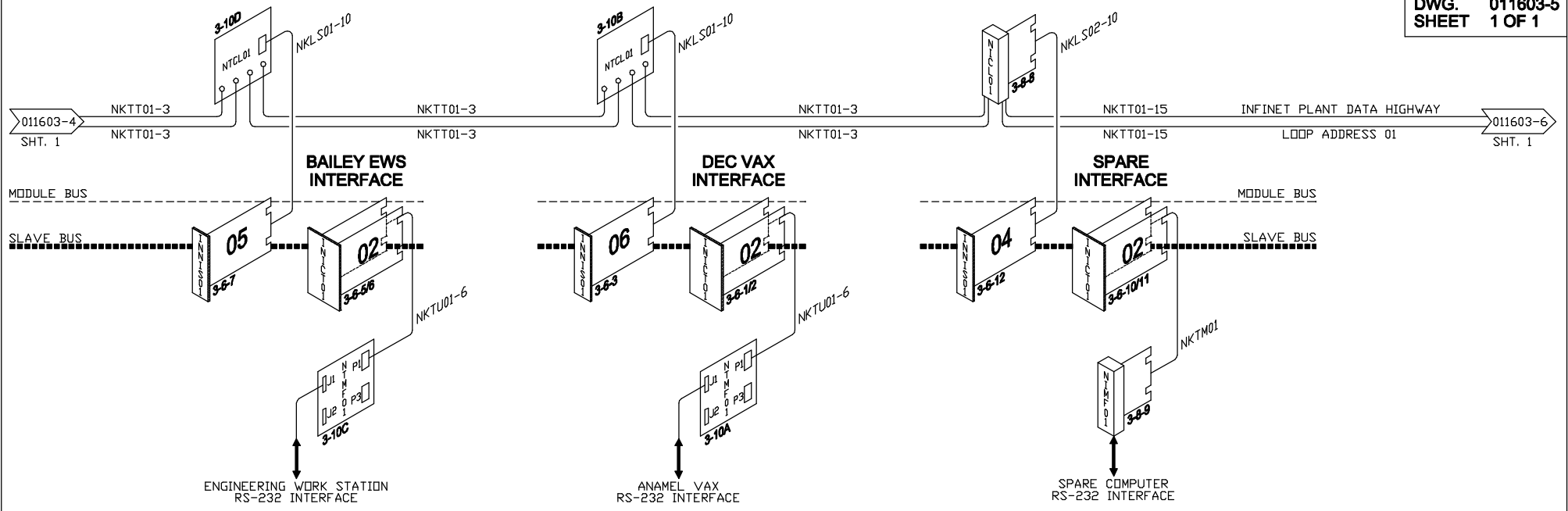


# BLENDING COMPLEX - COMPUTER INTERFACE UNITS 19, 20 & 21

LOOP	01
NODE	04, 05, 06
DWG.	011603-5
SHEET	1 OF 1



AutoCAD NAME:

**INTEGRAL CONTROL SYSTEM SERVICES, INC.**

**ICSS**

1303 SACKETT AVENUE  
Cuyahoga Falls, Ohio 44223  
Office: 330-923-6900 Fax: 330-923-2116

THIS DRAWING IS THE PROPERTY OF INTEGRAL CONTROL SYSTEM SERVICES, INC. NEITHER THE DRAWING, NOR REPRODUCTIONS OF IT, NOR INFORMATION DERIVED FROM IT IS TO BE GIVEN TO OTHERS. NO USE IS TO BE MADE OF IT WHICH IS OR MAY BE INJURIOUS TO INTEGRAL CONTROL SYSTEM SERVICES, INC.

APPROVED BY	DATE
DRAWING NO.      PART NO.	
THIS SHEET ALSO USED FOR	

DIMENSIONAL TOLERANCES UNLESS OTHERWISE SPECIFIED:  
MILLIMETRES      INCHES

1 PLACE ± 0.3 mm	2 PLACE ± .01
2 PLACE ± 0.003 mm	3 PLACE ± .001
3 PLACE ± 0.015 mm	4 PLACE ± .0005

MARK IDENTIFICATION AND MATERIAL NUMBERS ON TOOL DETAILS.  
PANT IDENTIFICATION NUMBERS ON STRUCTURAL WORK.

3rd ANGLE PROJECTION  
DO NOT SCALE DRAWING

QTY.		LINE NUMBER(S)	MANUFACTURER/DESCRIPTION	PART (MODEL) #
PART NO.		SHEET 1	SHEETS 1	DRAWING NO. 011603-5
DES. BY	DET. BY	TITLE		
CHECKED BY	SAFETY OK	PRODUCT BLENDING COMPLEX BAILEY INFI90 DISTRIBUTED CONTROL SYSTEM COMPUTER INTERFACE UNITS 19, 20 & 21 SYSTEM ARCHITECTURE		
DATE	SCALE			
DIVISION:		LOCATION/ACTIVITY:		